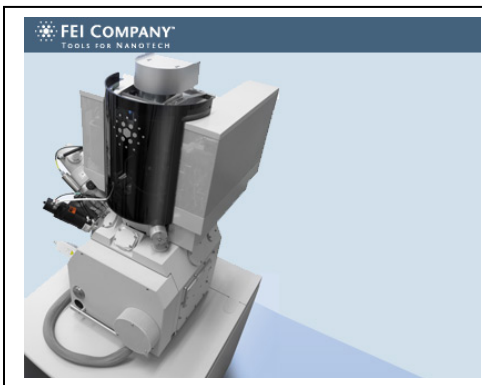


## State-of-the-Art DualBeam (FIB/SEM) Technology



Nanolab Technologies Investment in the New Helios NanoLab400 and Altura855 Dual Beam FIB/SEM combined with unparalleled expertise in DualBeam TEM Sample Preparation & Cross Section Techniques will be the drivers for our DualBeam Service Business. Nanolab Technologies is committed to meeting our customer's requirements for Quality, Reliability and Delivery.

Nanolab Technologies is also committed to a Technology Roadmap that will assure customer availability of State-of-the-Art Equipment and Technique Development necessary to support the future technology nodes.

For information or to arrange a demonstration please contact the New Pioneers in DualBeam Technology:

Nanolab Technologies Incorporated  
3833 North First Street  
San Jose, CA 95134  
Tel: 408-433-3320 Fax: 408-433-3321